

# 2024 Groundswell Profile

## Burgin Independent Schools

Click to Change District ▼

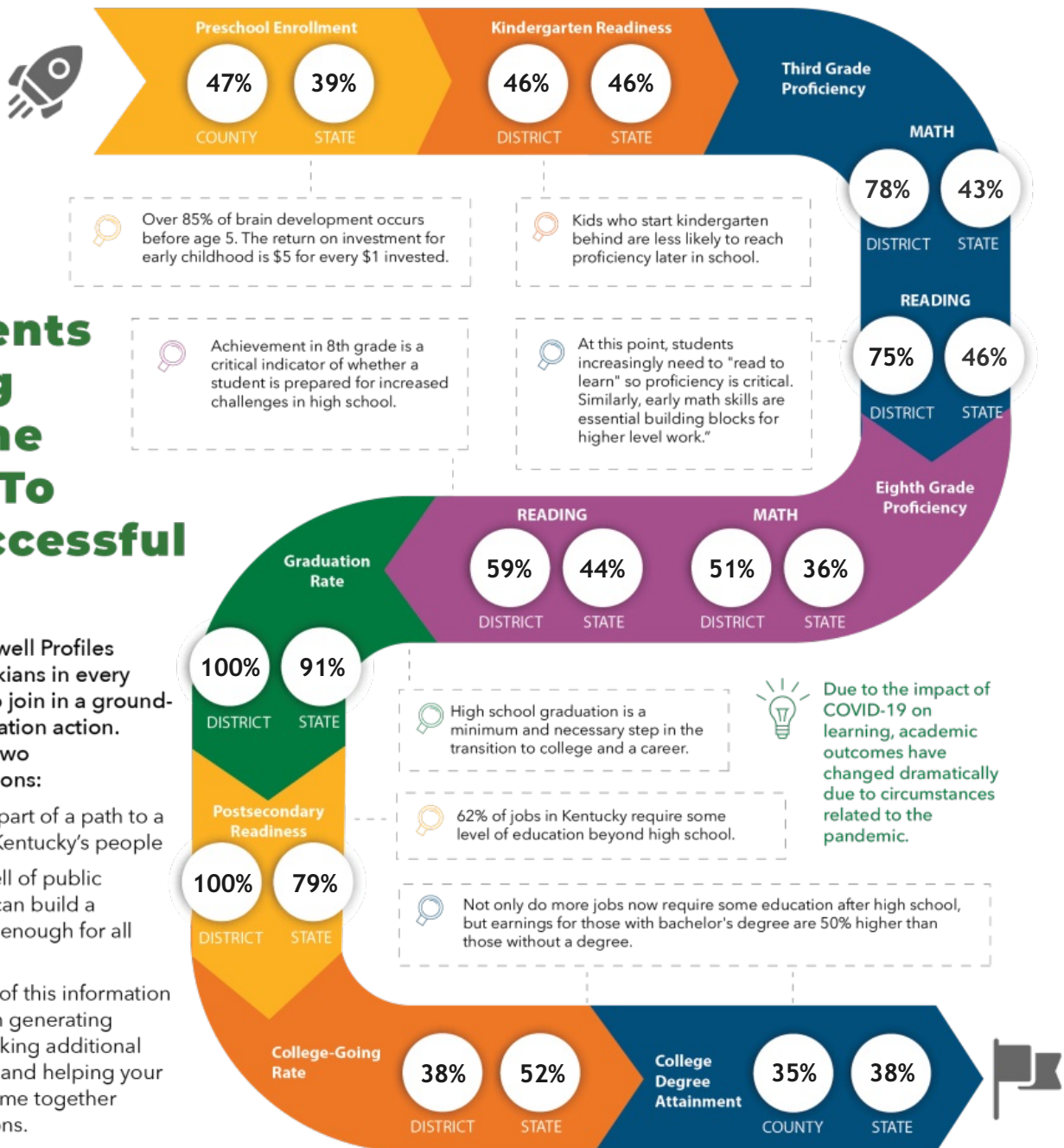
## How Are Students Doing On The Path To A Successful Life?

The Groundswell Profiles invite Kentuckians in every community to join in a groundswell of education action. They rest on two deep convictions:

- Education is part of a path to a larger life for Kentucky's people
- A groundswell of public engagement can build a pathway wide enough for all to flourish.

The best uses of this information will come from generating questions, seeking additional understanding, and helping your community come together around solutions.

If we build a groundswell of public action, we can develop each learner's unique strengths and open a pathway to a larger life for all.



Contact:  
groundswell@prichardcommittee.org



**The Prichard Committee**  
Building a Groundswell for a Big Bold Future

@PrichardCom  
www.prichardcommittee.org

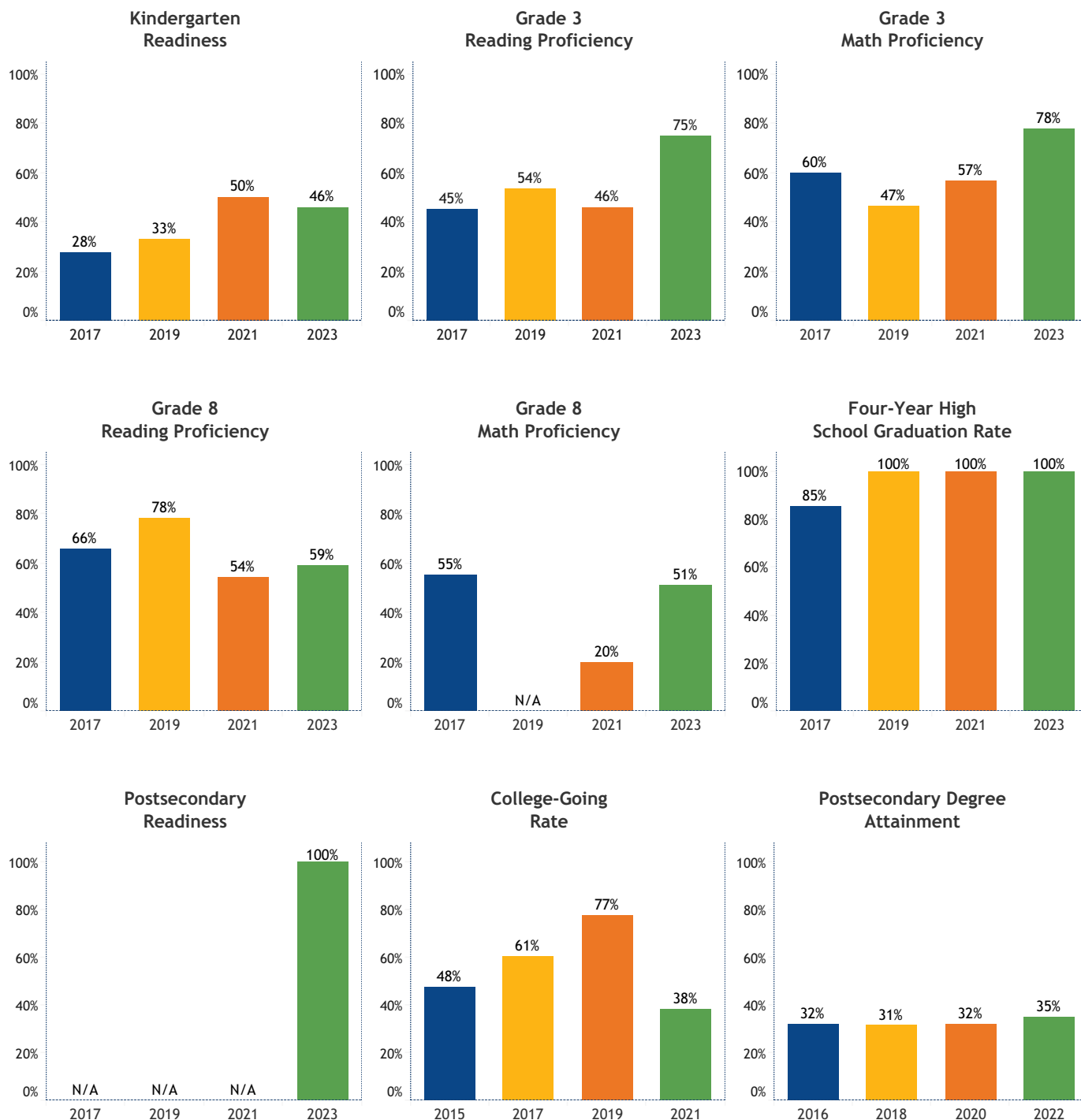
# 2024 Groundswell Profile

## Burgin Independent Schools

### HOW HAVE STUDENT RESULTS CHANGED IN RECENT YEARS?

These ten indicators track learning opportunities and outcomes for this community and the state of Kentucky. Progress on each one can build toward success on later ones and support movement on the pathway to a larger life.

Each indicator shows the most recent data available. There's additional information on each data point in our Study and Source Guide, available at [www.prichardcommittee.org/2024Profiles](http://www.prichardcommittee.org/2024Profiles).



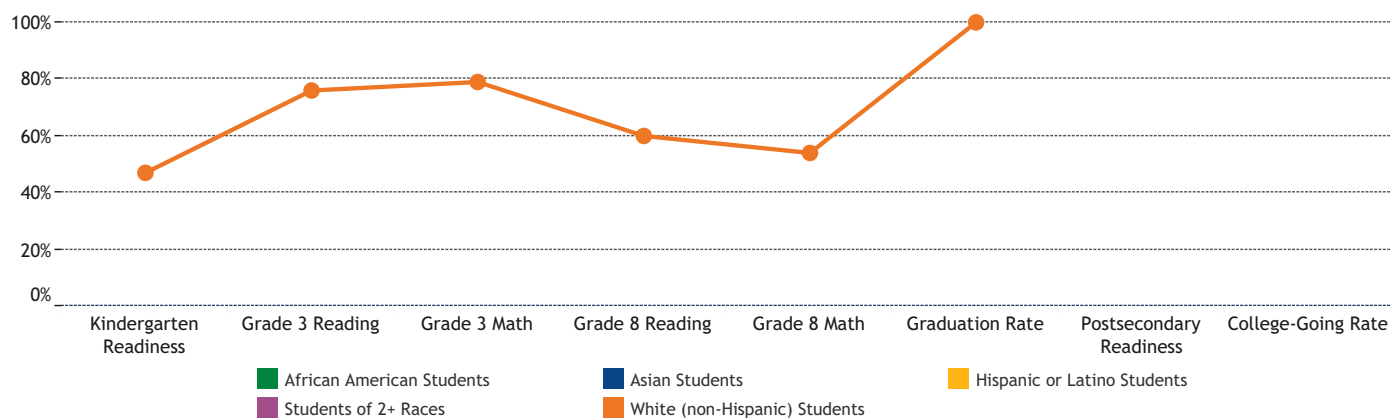
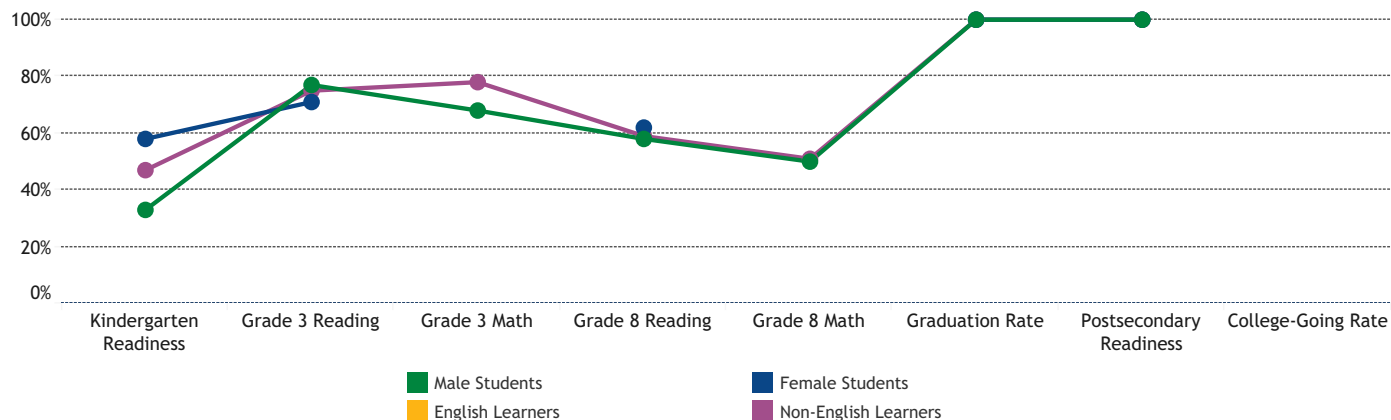
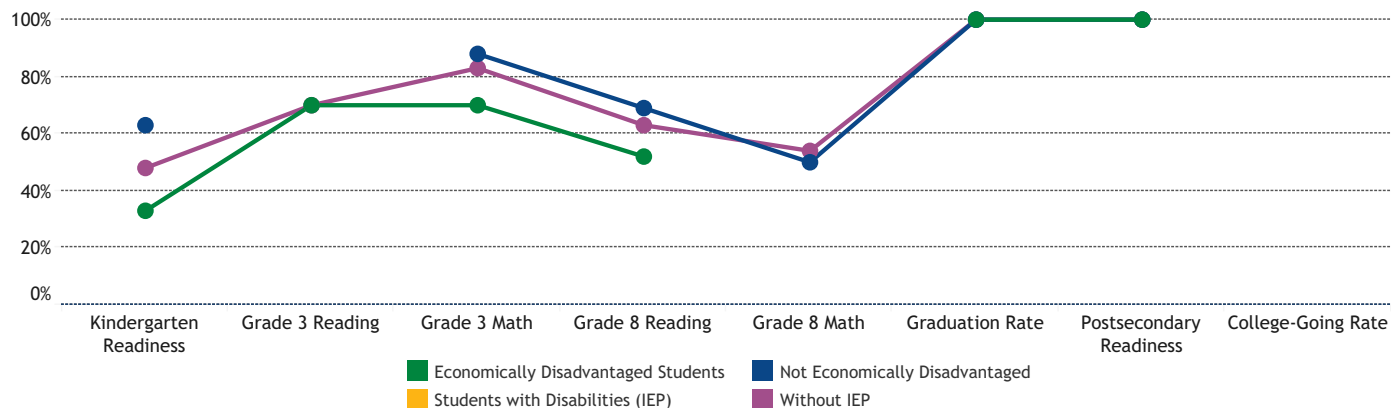
# 2024 Groundswell Profile

## Burgin Independent Schools

### HOW FAR ALONG ARE STUDENTS FROM DIFFERENT BACKGROUNDS?

Creating schools where all students can flourish will be an important part of building success for our communities! These seven indicators show results by student groups, each showing the most recent data released by the Kentucky Department of Education.

If a group has missing points, that means the Department has not released those results, usually as part of policy designed to protect the privacy of individual students.



# 2024 Groundswell Profile

## Burgin Independent Schools

### ARE WE BUILDING THAT LARGER LIFE?

	County	State
Residents 18 and Older Voting in 2022 Election	48%	43%
Median Household Income	\$60,728	\$60,183
Unemployment Rate	4%	4%
Children Below 200% Poverty	35%	44%
Children in Poverty	15%	21%
Population in Poverty	11%	16%

	County	State
Teen Births Per 1,000 Female Residents 15 -19	33	29
Low Birthweight	8.2%	8.8%
Adult Obesity	40%	37%
Adult Smoking	23%	22%
Flu Vaccine	40%	48%

	County	State
Population 2010	21,331	4,339,367
Population 2020	22,641	4,505,836
Percent Population Change Since 2010	6%	4%

	District	State
Student Enrollment	463	634,424
Chronic Absenteeism	18%	30%
School Expulsions, Suspensions & Removals Per 100 Students	5	15
Spending Per Pupil	\$14,641	\$15,289
Teachers	35	40,628
Average Years of Teaching Experience	12	12

	County	State
Children Under 5	1,325	261,152
Child Care Capacity	656	162,732
Preschool Enrollment	148	21,355

### WHAT ELSE DO WE KNOW ABOUT OUR SCHOOL DISTRICT?



When communities, families, and schools work together, learning can take off. Your community may already have work underway, including schools with Family Friendly Certification and recognized Groundswell Actions.

Visit [prichardcommittee.org/groundswellinitiative](https://prichardcommittee.org/groundswellinitiative) or contact us at [groundswell@prichardcommittee.org](mailto:groundswell@prichardcommittee.org) to learn about those efforts and find other resources for use in local action.



Contact:  
[groundswell@prichardcommittee.org](mailto:groundswell@prichardcommittee.org)



**The Prichard Committee**  
Building a Groundswell for a Big Bold Future

@PrichardCom  
[www.prichardcommittee.org](https://www.prichardcommittee.org)