



**The
Prichard
Committee**

2020 Annual Report

Education Recovery for a Big Bold Future





Who We Are

We believe in the power and promise of public education – early childhood through college - to ensure Kentuckians' economic and social well-being.

We are a citizen-led, bipartisan, solutions-focused nonprofit, established in 1983 with a singular mission of realizing a path to a larger life for Kentuckians with education at the core.

What We Do

We study pressing education issues, help inform the public and policymakers of our findings, and engage communities to celebrate success and design unique local solutions to our challenges.

We track national outcomes in education and quality of life. Our focus is to move Kentucky into the top rankings of all states in these areas.

Our Work



The Groundswell Initiative

We respond to the unique needs of students and families locally to improve outcomes in education. Groundswell members are the boots on the ground in a campaign to realize a Big Bold Future for Kentucky.



Kentucky Collaborative for Families and Schools

We are a network of partners offering engagement and leadership development opportunities for families, schools and communities as a core strategy for improving student achievement and home of the Commonwealth Institute for Parent Leadership.



Strong Start KY

We unite Kentucky's early childhood advocates through shared goals to strengthen early care and education for Kentucky children from birth through third grade and increase access to high quality early childhood opportunities.



Prichard Committee Fellows

We are parents, students, and teachers who formally engage with the Committee as community researchers and journalists to launch strategic initiatives designed for local improvement.



Equity Coalition

We advocate for honest and inclusive conversations that promote culturally responsive policies, practices and imaginative investments to repair longstanding failures to deliver educational excellence for students who have been marginalized.

Education Recovery for a Big Bold Future



Brigitte Blom Ramsey
President & CEO

The COVID-19 pandemic of 2020 changed everything about our lives, especially the way education is delivered. One whole year has passed since we retreated to our homes and our places of rest became our offices and our student's classrooms. As the COVID-19 vaccine has become more available, our attention is rightly turning to recovery and building a new foundation. For us at the Prichard Committee, that means an education system that is stronger than ever. It's time to take everything learned in the last year to make meaningful use of the federal stimulus funds and stem the tide on learning loss.

Ensuring our young people are prepared for the future of work and that we don't have a lost generation to COVID requires all of us working much more closely together to achieve full recovery. It requires conversations between all the leaders in our communities, and pooling all the resources each can bring to the table. It requires real conversations about the challenges and a shared plan of action for the months and years ahead.

Our school districts and many government organizations will have more resources at their disposal than we've seen in years. For K-12 alone, the federal "rescue" money effectively doubles the per pupil allocation our districts typically receive from the state. Additionally, more state funding from the Kentucky General Assembly re-invests in all three levels of education.

Given the need and the resources available, it is time for communities to roll up their sleeves and have creative, solutions-focused conversations about how to use what we've learned in the past year to do more than recover. We must build a new foundation for education – one that is stronger, more resilient, and seeks to repair the challenges and inequities laid bare amidst COVID.

Over the last year, the Prichard Committee surveyed and interviewed parents, students, educators, childcare providers, families, and college students to better understand the impact of COVID. We learned that we need more high-quality childcare options for families of all income levels and that the childcare system and its workers are essential for providing a strong start for our youngest learners. For both the K-12 and higher education, these three truths also emerged:

- Inequities based on student groups remain starker than ever.
- Built-in mental health supports need to be funded & prioritized.
- The digital divide must be closed at all costs.

Now is the time for communities to establish a shared understanding of the recovery necessary. Everyone must be part of the plan to realize a strong recovery in the months and years ahead, and to develop a new foundation for greater progress.

We are challenging communities across the Commonwealth to start these conversations – and our school districts are the likely leaders locally to ensure this happens. We're also challenging our 130 Prichard Committee members and over 1,000 Groundswell members to be part of these conversations – and these resulting action plans.

These "guiding coalitions," composed of students, parents, community members, and business leaders, can work together to ensure solutions are responsive to community needs. These coalitions must ensure that the vast array of resources coming into our state are leveraged for the greatest good so that Kentucky can realize its Big Bold Future.

A handwritten signature in black ink, reading "Brigitte Blom Ramsey".



Meeting the Educational Challenges of 2020

Early Childhood Education



Educating Kentuckians about family child care

With funding from the W.F. Kellogg Foundation and local partners, we have been working with the Kentucky Cabinet for Health and Family Services Division of Child Care and other creative leaders across Kentucky to seed new ideas and discover which ones hold most promise for our child care ecosystem. This project, Expanding High-Quality Family Child Care in Kentucky, started with an advisory group of experts, practitioners, and community leaders charged with exploring solutions to increase the supply of high-quality child care options.

Through the project, leadership teams in five Kentucky regions have gathered to pilot new approaches to increase access to high-quality child care for infants and toddlers and support family child care homes. Through the project, the KY CHFS Division of Child Care (DCC) has provided ongoing support to each regional leadership team, through training, marketing materials, and Spanish translations for numerous documents.

In the recovery from the COVID-19 public health crisis, family child care homes will be an even more important part of helping Kentucky families access high-quality care for their young children as they return to work. Since the crisis began, project leaders have expanded the advisory group membership on to include more business and education leaders. These directors have committed to contributing to efforts to recruit, prepare, and find solutions to provide stable funding for family child care providers.

K-12 Education

Teacher Fellows offer aspirations for future

A group of teachers from 23 counties across Kentucky, convened by the Prichard Committee, released a letter in December offering shared priorities for teaching and learning – now and as we emerge from the pandemic. The letter is also a commitment to turning teacher-identified education priorities into reality in classrooms across Kentucky.

The letter asks that all Kentucky teachers, individually and together, commit to the following: providing equitable learning opportunities for each and every student; developing and expanding the skills that strengthen the quality of teaching and the learning experiences of students; developing stronger, more collaborative relationships with students, parents and families, and our communities; and promoting anti-racism and diverse perspectives in culturally aware and responsive instruction.

State, district, and school leaders are also asked to help create collaborative settings that build cultures where confident teachers can implement meaningful learning and systems that authentically support engagement with families and community members. Community and youth leaders are also tasked with advocating for learning experiences and school systems that best support the authentic needs of young people.

“We plan to follow this founding cohort of Teacher Fellows through the next year and to tell their stories as they work to implement the priorities in the letter at the local level,” said President & CEO Brigitte Blom Ramsey.



Higher Education



College affordability critical post-COVID

Access to affordable, high-quality postsecondary education opportunities is a must for Kentucky to meet its educational, economic, workforce, and civic potential. With support from the Lumina Foundation's Strategy Labs, we convened a group of stakeholders representing students, institutions, advocates, community groups, and policy makers, to explore this big question – How can Kentucky better define postsecondary affordability?

We approached this question with the belief that a shared understanding of what affordability means is critical to crafting new solutions in this space. Recognizing the shared responsibility of all higher education stakeholders in overcoming financial barriers and ensuring student success is also key to this work. To outline these beliefs and needs, we released a series of blog posts on college affordability in 2020.

From 2008 through 2020, Kentucky's state support to public colleges and universities declined 21%, or over \$220 million. During the same period, tuition costs increased 51% at public 2-year colleges, 71% at public 4-year regional campuses, and 73% at public 4-year research campuses. Kentucky must work to build a shared understanding of what affordability means to help guide public investment. We also must ensure that a diverse set of stakeholders help students understand the possible pathways to achieving a degree or credential. This is more evident given the COVID-19 pandemic and many of the costs that it has laid bare – such as health care, housing, food, child care, and access to technology.

Quality of Life

Closing the digital divide at all costs

When school and business closures forced Kentuckians to work and learn from home in 2020, the Prichard Committee became concerned about Kentucky's citizens who lacked access to the internet. We knew that 2017 census data showed that Kentucky ranked 44th in the nation for broadband access. Nearly 25 percent of our households did not have a subscription for high-speed internet, and more than 15 percent did not have a computer, according to the U.S. Census Bureau.

In that census, one-third of households without home internet reported that it was simply too expensive. In some rural parts of the state, high-quality internet connections can be hard to find, whether or not people have the funds to pay for it. Throughout 2020, our survey work showed the urgent need for Kentucky to be better connected to internet infrastructure and for costs of connection to not be a barrier for low-income families.

This need to expand internet connectivity to all Kentucky homes became a large focus for us in 2020 and will continue to be part of our work well into the future. We hosted several online discussions with internet providers, educators, and families to learn the extent of the problem and to talk about solutions. We encouraged Congress and the Kentucky General Assembly to fund broadband access, and we are now seeing great progress in expansion throughout the state. Despite the status of the COVID-19 pandemic, Kentuckians must be able to access the internet for work, school, and health care, and the Prichard Committee will be at the table, pushing for affordable and rural access.



Longtime Prichard contributor retires

Q: How long have you worked with the Prichard Committee?

A: I began working with the Prichard Committee in 1994, consulting with Bob Sexton and the staff about issues related to communications, government relations and policy. My avenue to the Prichard Committee came via the Kentucky Center for Public Issues, a nonprofit that Bob had co-founded a few years earlier; I edited the center's publication, the Kentucky Journal, that focused on providing different points of view on policy issues that were in the headlines.



Diana Taylor, who has contributed to the Prichard Committee's body of work since 1994, announced her retirement in December 2020. Prior to launching a consulting firm, Taylor-Gray Associates, in 1994, she served as Chief of Staff for the Governor of Kentucky. She also served as issues and communications director for two gubernatorial campaigns and co-chaired a successful statewide effort to amend Kentucky's constitution to allow gubernatorial succession. Taylor is a former reporter and state news editor for The Associated Press in Kentucky and Tennessee, and Frankfort bureau chief and columnist for the Lexington Herald-Leader.

Q: How have you seen our work change over the years?

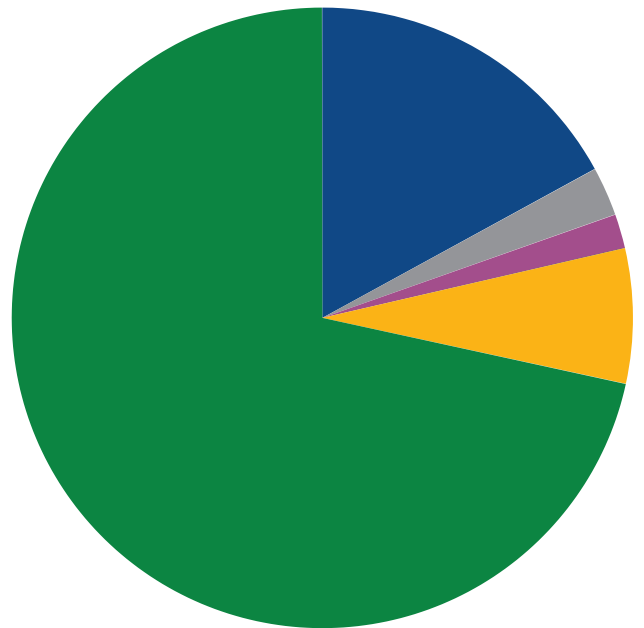
A: The emphasis has remained unchanged, of course, with advocacy on behalf of improving education front and center. The changing political environment prompted perhaps the biggest shift in the style of work, necessitating the development of different relationships during leadership transitions in Frankfort.

As it has with all other aspects of life, technology also prompted some pretty dramatic changes. In the early days, it wasn't uncommon for members to receive hefty packets of reading materials from committee staff on a regular basis. This transitioned to emails, and later to the current communications platforms. Also, it has been good to see the committee restore its greater focus on postsecondary education – the origin of its creation – and early childhood.

Q: How do you see us moving the needle on education in the coming years?

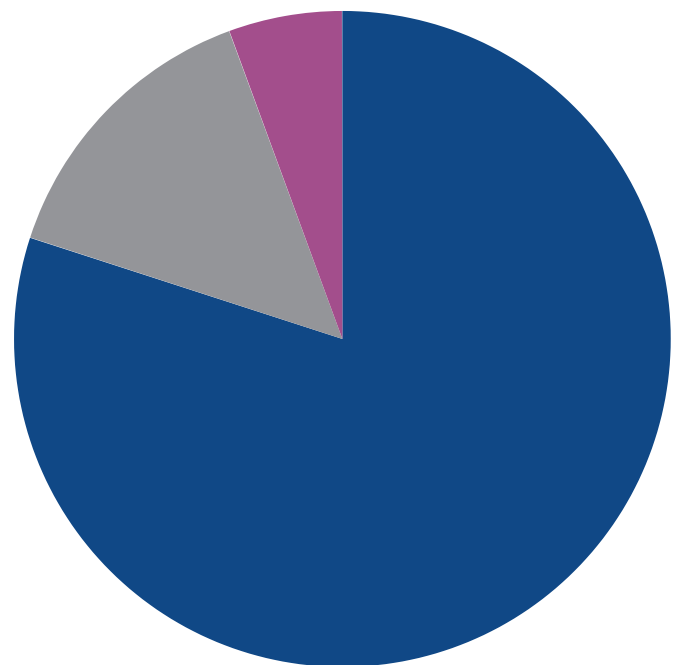
A: Push, push, push. The pandemic, ongoing economic and budget challenges, political upheavals, and other difficulties could result in policy fatigue on the part of advocates – and it would be an understandable response. But the Prichard Committee sticks and always will. I often took note through the years of the members' intense interest in the specifics of education policies and practices, and it never wavered. That level of commitment and attention led and supported by the dedicated staff – will make all the difference.

2020 Revenue Sources



Total Income
\$2,534,887

2020 Expenses



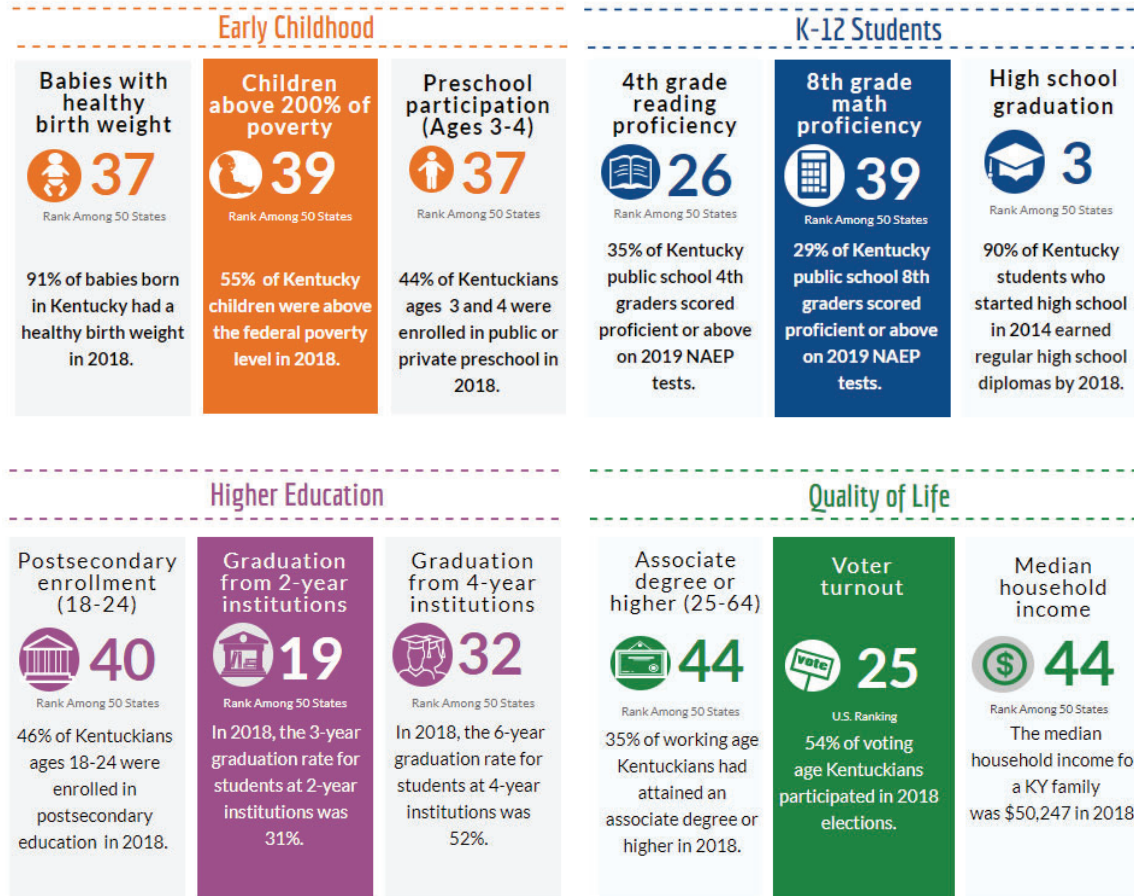
Total Expenses
\$2,547,336
Net Assets
\$5,167,893



New rankings report sets tone for strategic plan

In 2020, the Prichard Committee sunset its Top 20 by 2020 report, replacing it with a new approach to measuring Kentucky's progress in pursuit of a "path to a larger life." In this work, we chose 12 indicators that allow us to see Kentucky from multiple angles: comparing our progress relative to other states, seeing trends over multiple years, and identifying areas where urgent attention is needed. Together, these indicators allow us to present a vision of a Big Bold Future where every Kentuckian can thrive, contribute to, and benefit from our shared progress as a state.

The report builds on the baseline of our last decade of reporting and on two decades of mobilizing communities before that. To that end, our board of directors has approved our 2021-25 strategic plan which is structured around the Big Bold Future indicators. Over the next five years, we believe we can begin to move Kentucky into the top rankings of all states in these areas.



2021-2025 Strategic Plan

Goal 1: STUDY			Goal 2: INFORM			Goal 3: MOBILIZE		
Kentucky delivers education excellence with equity, preparing Kentuckians for the economy of the future.			Kentucky breaks cycles of generational poverty by fully connecting the power of education, the economy and quality of life.			Kentucky communities mobilize around a Big Bold Future through deepened civic engagement and implementing innovative solutions locally.		
Increase % of Kentuckians with a high-quality postsecondary degree or credential from 49% to 55% by 2025, with more significant progress for student groups farthest behind. ¹			Increase the % of Kentucky children living above the federal poverty level from 55% to 61% by 2025, with more significant progress for family population groups farthest behind. ²			Increase the % of Kentuckians who vote from 54% to 61% by 2025, with more significant progress for populations more significantly underrepresented. ³		
Early Childhood Delivering a Strong Start from Birth	K-12 Education What Does a GREAT School Look Like?	Postsecondary Education & Training A Dynamic Lifelong Learning System	Groundswell Toolboxes Equipping Citizens for Action	Prichard Committee Fellows Citizen Research & Journalism	Big Bold Future Campaign National Rankings Report & Community Profiles	Organizing Kentuckians Prichard Committee "Model" of Engagement	Engaging Kentuckians Increasing Civic Engagement in the Big Bold Future	Mobilizing Kentuckians Citizens Taking Groundswell Action Locally

Our Donors

\$50,000+

James Graham Brown Foundation
U.S. Department of Education
United Way of Greater Cincinnati
The Woodrow Wilson National
Fellowship Foundation

\$25,000+

Alliance for Early Success
Lumina Strategy Labs Technical
Assistance Fund
Toyota Motor Manufacturing, KY

\$10,000+

C.E. and S. Foundation
Commonwealth of KY - Project
Aware grant
The Education Trust
Sandra Frazier
The Gheens Foundation
The Hager Educational Foundation
Augusta Brown Holland & Gill
Holland, Jr.
Lift A Life Foundation
Metro United Way
St. Elizabeth Healthcare
Teach for America

\$5,000+

Delta Dental of Kentucky
Kevin Hable
National Geographic
Pathways 2 Tomorrow
State Farm Insurance Companies

\$2,500+

Anonymous
AT&T Kentucky
BB&T
Columbia Gas of Kentucky, a Ni-
Source Company
The RC Durr Foundation
Larry Holladay
LG&E & KU Foundation
RossTarrant Architects

\$1,000+

Anonymous
Ina B. Bond Ashbourne Charitable
Fund, Inc.
Bethany Baxter and Willie Davis
Bruce & Rachel Belin
David Campbell

Ben Cundiff
Roger Dalton
Garry & Susan Elkington
EM Ford and Company
Bill & Kim Garmer
Jane & Arthur Graham
Bruce & Lia Hager Fund of The Great-
er Cincinnati Foundation
John & Donna S. Hall
Billy & Mary Harper
Evan Holladay
Franklin & Jill Jelsma
Joseph W. Kelly
Mr. & Mrs. Rich Maddux
Charles & Fannie Louise Maddux
Lewis N. & Barbara Melton
Leon Mooneyhan
Dennis E. Pearce
Planters Bank
John & Hilma Prather
Lowell & Sasha Press
Anthony Raimondo
Brigitte Blom Ramsey
Dorothy S. Ridings
Dr. Julia Link Roberts
Don & Mary Ruberg
Marby Schlegel
Jon L. & Rebecca Sights
Toyota Motor Manufacturing, Ken-
tucky Employee Matching Gift
Program
David Tachau & Susannah Woodcock
Lois C. Weinberg
Harvie B. & Nellie D. Wilkinson
William H. & Margie Wilson

\$500+

Anonymous
David & Bonnie Adkisson
Clay Barkley
Phil & Jane C. Bellomy
Andrew Brennen
Brent Cooper
Doug & Suzetta Creech
Will & Christa Cronin
Scott & Jessica Fletcher
Bonnie Lash Freeman
Mark & Becky Goss
Donna A. Hall
Debra Hensley
Kentucky American Water
Margaret Lanier
Joseph U Meyer

Dr. Ralph & Pam Miller
Eleanor B. Moore
John & Maggie Price
Family Fund at Blue Grass
Community Foundation
Wynn & Linda Radford III
John & Jean Rosenberg
Mr. & Mrs. Robert Straus
Julie Tennyson
Beau & Susan Perkins Weston

\$250+

Anonymous
Doug & Laura Beard
Dennis & Susan Blom
Brady & Melody Brooks
Eleanor F. Brown
Rebecca and John Y. Brown, III
Leo Calderon
Garren & Susan Colvin
Community Foundation of Louisville
Sam Corbett
Alfonso "Al" Cornish
Robert & Debi Danielson
Jeanie Dorton
Virginia B. Edwards
Sam & Mary Evans
W. Clay H. Ford
Steve & Sarah Ford
Gregg & Leslie Fowler
Timothy & Susan Gilmore
Trey & Nancy Grayson
Richard & Cindy Heine
Rodney Henderson
Allen Holbrook and Forrest Roberts
Dan Kemp
Laurel Martin
Charles McGrew
Drs. Prabodh & Daksha Mehta
Robert E. Milward Fund at Blue
Grass Community Foundation
Harry Moberly
Tom & Amy Nickell
The Honorable & Mrs. Paul Patton
Jackie Pope-Tarrance
Kent & Julie Price
Kathy Reed
Al Rider
Jill E. Robinson
Robert B. Sexton
Sandra and Tony Steier
Diana Taylor & Bob Gray
Darcy Thompson

Robert L. & Carolyn Wehling
Elaine Wilson
Dale & Gwen Young
Uta Ziegler

Up to \$250

Anonymous
Gage Abell
Jerry & Madeline Abramson
Kate Akers
Bill Alverson
Joy Arnold
Marisa Aull
Brady Barlow
Daniel Barondes
Duncan Barron
Tony Belcher
Kathy Bethel
Jackie Betts
Robert Biagi
Myron Biddle
Diane Black
David & Jennifer Bolt
Thomas Boysen
Laura Brakeen
Gary & Sandy Bricking
Ellen Bryant
Avril Burg
Becky Burgett
Darlene Faster Burmann
PJ Burns
Caroline Byerman
Tyler Caldwell
Amy Carder
Audrey Carr
Helen Carroll
Neill Caudill
Breck Cayce
Camille Chenault
Will Cox, Jr.
Gary S. Cox
Heather Crabbe
Meg Crail
Julie M. Crow
Philip & Terrie Curd
Cory Curl
Robbie Dircks
Tom & Janice Donan Charitable Fund
Sarah Donoho
Zachary Dorff
Hannah Edelen
Jonathan Edelman
Raine Engle-Minichan

Lisa Ragan Farthing
Gentry Fitch
Robert J. & Sandra M. Fitz
Richard & Sharon Foley
Esther Gauthier
Marie Gauthier
Jason & Brooke Gill
Jill Giordano
Heidi Petrin Givens
Government Strategies
Dr. & Mrs. Kenneth B Graulich
Sara Beth Gregory
Aaron Griesdom
Julie Griggs
Jim Griggs & Kim McBride
Leighanne Guettler-James
Gene & Marian Guinn
Nina Hahn
Marion Halliday
Mike & Kathleen Hammons
Jo Harper
Roy Harrison
Basil & Anne T Henderson
Ed & Gerri Henry
Leonard Hickerson
Annette Hines
Emerson Holladay
C. Randolph & Kevin H. Holtz
James Howard
Anika Humaira
Eugene Hutchins
Al Isaac
Anthony & Andria Jackson
Caroline Jaros
Sam & Theresa Jensen
JoAnn T. Johnson
Doug & Jackie Jones
Judy & John Kasey
Earnest Kellogg
Ruth Webb Kelly
Sally Smock Lacy
Gabrielle Lajoie
Jined Lamata
Thomas & Carol Lamm
Hedrick/Lantz Charitable Foundation
Lonnie Lawson
Linda LeCraw
Wendy Lesko
David Levy
Steve Livingston
Shawn Lyons
Leanne Macleod
Zander Magee

Angie Major
Beth Malcom
Jordan Mareno
Nancy Martin & Fred Hendler
Elizabeth Mays
Stacey McChord
Mental Health America of Kentucky
Chris & Ouita Michel
William Miller
Bob & Marci Miller
Bill & JoEllen Mitchell
M. Hayes Mizell
Audrey Morrison
Frances Moss
Christian J. Motley
Mari Mujica
Melissa Moore Murphy
Cynthia Naiman
Hadiyah Newbern
Lee Nimocks and Connie Payne
Michael Norman
David R. O'Bryan
Dominique Olbert
OJ Oleka
Shelby O'Neil
Col Owens
Polly Page
Sne Parikh
Stacey Parker
Jay Parrent
Rupesh Patel
William Payne
Julia Pile
Donavan Pinner
Michael & Laura Pitman
Mollie Pope
Charles & Linda Porter
Sondra A. Price
Phoenix Ramsey
Ariel Blom Ramsey
Mack Ramsey
Cole Ramsey
Tina Raver
Macke Raymond
Michael & Aprile Redden
Kristie Reed
Roger Reichmuth
Maria Rigsby
Rona Roberts
Bob Rouse
Daniel & Wendy Rowland
Jean Sabharwal
Ken & Becky Sagan

Adam Fletcher Sasse
Benjamin & Julie Schmidt
Pam Shepherd
Jane Shropshire
Kristi Simpson
Dorothy Sims
Shana Sippy
Sarah Slack
Jason Slone
Felicia Cumings Smith
Stephen Snyder
Jiten Solanki
Erin Stacks
C Thomas Steiner
Delaney Stephens
Terry Strieter
Student Voice Corporation
Griffin Stulman
Lynn Sygiel
Afi Tagnedji
Laney Taylor
Dale, Nancy & Kurt Thoma
Myron Thompson
Heidi Thompson-Abell
Killian Timoney
Joe & Terry Tolan
Mr. & Mrs. James Votruba
Willie Walker
Emmanuel Washington
Debra Wekstein
Dr. & Mrs William B. Wheeler
Wesley Whistle
Adrian Wichman
Gene & Becky Wilhoit
Dr. Angela R. Wilkins
Diana Willen
Ruth Willoughby
Jamie Rosenstein Wittman
Wyatt, Tarrant & Combs
Bailey Yates
Elizabeth Yates
Jacob Yates

The Beverly Nickell Raimondo Parent Leadership Award

Phil & Jane C. Bellomy
Will & Christa Cronin
Richard & Sharon Foley
Jane Graham
Dr. & Mrs. Kenneth B Graulich
Donna A. Hall
Laurel Martin

M. Hayes Mizell
Tom & Amy Nickell
Anthony Raimondo
Maria Rigsby
Dale, Nancy & Kurt Thoma
Dr. & Mrs. William B. Wheeler
William H. & Margie Wilson

In Memory

Al Giordano: Jill Giordano
Dr. Nick & Pat Kafoglis: Anonymous
Carol Lamm: Steve Livingston;
Susan Perkins Weston
Philip Lanier: Margaret Lanier
Bill McCann: Eleanor F. Brown;
Rebecca and John Y. Brown, III
Timothy & Susan Gilmore; Jim Griggs
& Kim Mc Bride; Nina Hahn; Mental
Health America of Kentucky; Eleanor
B. Moore; Charles & Linda Porter;
Anthony Raimondo; John & Jean
Rosenberg; Dorothy Sims; Sandra
and Tony Steier; Wyatt, Tarrant &
Combs;
Wade Mountz: Jeannie Dorton;
Richard & Cindy Heine; Charles &
Fannie Louise Maddux
Don Phenneger: David R. O'Bryan
Bev Raimondo: Shawn Lyons
Robert F. Sexton: Ruth Webb Kelly;
Shawn Lyons
Bob & Pam Sexton: Chris & Ouita
Michel
Kyle Joseph Wilkins: Dr. Angela
Wilkins

In Honor

John & Elizabeth Blom: Phoenix
Ramsey
Garnett Cayce: Breck Cayce
Andria Jackson: C. Randolph &
Kevin H. Holtz
Mary Jane Littleton: Robert & Debi
Danielson
Al & Ruth Lonnemann: Ariel Ramsey
Bo & Pat McCord: Mack Ramsey
JoEllen and Bill Mitchell: Cole Ramsey
Randy the Alpaca: Griffin Stulman
& Elizabeth Yates
Bill & Margie Wilson: Lowell &
Sasha Press

Prichard Committee Members

Madeline Abramson, Louisville
 David Adkisson, Lexington
 C.B. Akins, Lexington
 Bill Alverson, Paris
 Marisa Aull, Lexington
 Clay Barkley, Louisville
 Brady Barlow, Lexington
 Justin Bathon, Georgetown
 Bethany Baxter, Lexington
 Jessica Berry, Lexington
 Robert Biagi, Shelbyville
 Holly Bloodworth, Murray
 David Bolt, Morehead **
 Andrew Brennen, Nicholasville
 Khamari Brooks, Louisville
 Rebecca Burgett, Verona
 Leo Calderon, Bellevue **
 Penny Christian, Lexington
 Alva Mitchell Clark, Lexington
 Skip Cleavinger, Bowling Green
 Nancy Collins, Hazard
 Martha Layne Collins, Lexington
 Garren Colvin, Villa Hills **
 Brent Cooper, Fort Thomas
 Sam Corbett, Louisville
 Alfonso Cornish, Louisville **
 William Cox, Jr., Madisonville
 Heather Crabbe, Covington
 Felicia Cumings Smith, Frankfort
 Ben Cundiff, Louisville **
 Cory Curl, Versailles
 Robert Danielson, Hazel
 Scott Davis, Henderson
 Cherie Dawson-Edwards, Louisville
 Jean M. Dorton, Lexington
 Susan Elkington, Lexington **
 Mary Evans, Bowling Green
 W. Clay H. Ford, Owensboro **
 Bonnie Lash Freeman, Louisville **
 Bill Garmer, Lexington **
 Jill L. Giordano, Princeton
 Jane Graham, Lexington
 Nancy Grayson, Walton
 Kimberly Green, Bowling Green
 Sara Beth Gregory, Monticello
 Cheri Grinnell, Smithfield

Kevin Hable, Louisville
 Donna S. Hall, Lexington
 Michael J. Hammons, Park Hills
 Billy Harper, Paducah
 Jo Alyce Harper, Cadiz
 Larry Holladay, Fort Thomas
 Augusta Brown Holland, Harrods Creek
 Kerry Holleran, Brooksville
 David L. Holton, II, Louisville
 Franklin Jelsma, Louisville **
 Doug Jones, Morehead
 Tasha Jones, Frankfort
 Cheryl Karp, Louisville
 Joseph Kelly, Salvisa
 J. Daniel Kemp, Hopkinsville
 Lonnie Lawson, Somerset
 Shawn Lyons, Lexington
 Fannie Louise Maddux, Pembroke
 Rich Maddux, Hopkinsville
 Angie Major, Hopkinsville
 Brenda Martin, Russell
 Elissa May-Plattner, Melbourne
 Elizabeth Mays, Louisville
 Stacey McChord, Lexington
 Charles McGrew, Lexington
 Norma Meek, Ashland
 Daksha Mehta, Elizabethtown
 Joseph Meyer, Covington
 Quita P. Michel, Midway
 Herb A. Miller, Lexington
 Bill Mitchell, Butler
 Harry Moberly, Richmond
 Leon Mooneyhan, Shelbyville
 Melissa Moore Murphy, Lexington
 Shannon Morgan, Bowling Green
 Christian Motley, Lexington **
 Neill Myers Caudill, Bowling Green
 David O'Bryan, Lexington
 OJ Oleka, Louisville
 Charlie Owen, Louisville
 Polly Page, Villa Hills
 Jay Parrent, Princeton
 Paul E. Patton, Pikeville
 Donavan Pinner, Hopkinsville
 Laura Pitman, Murray
 Margaret G. Pope, Paducah

Mollie Pope, Barbourville
 Hilma S. Prather, Somerset
 Louis Prichard, Lexington
 Wynn L. Radford, Hopkinsville **
 Aprile Redden, Foster
 Kathy Reed, Bardstown
 Al Rider, Upton
 Dorothy Ridings, Louisville
 Julia L. Roberts, Bowling Green **
 Donald L. Ruberg, Edgewood
 Becky Sagan, Lexington
 Keith N. Sanders, Owensboro
 Julie H. Schmidt, Prospect
 Ben Self, Lexington
 Jon L. Sights, Henderson
 Jason Slone, Morehead
 Hollie Spade, Louisville
 Delaney Stephens, Somerset
 David B. Tachau, Louisville
 Afi Tagnedji, Louisville
 Laney Taylor, Georgetown
 Julie Tennyson, Paducah
 Darcy Thompson, Louisville
 Don Trowell, Louisville
 James Votruba, Lakeside Park
 Emmanuel Washington, Lexington
 Lois Weinberg, Hindman
 Mary Gwen Wheeler, Louisville
 Laura White-Brown, Morehead
 Gene Wilhoit, Lawrenceburg
 Harvie Wilkinson, Lexington **
 Anisa Willis, Ft. Mitchell
 William H. Wilson, Lexington **
 Elaine A. Wilson, Somerset
 Gwen Young, Lexington **

** Denotes board member status



Our Board of Directors



Wynn L. Radford, III
Board Chair



W. Clay H. Ford
Board Vice Chair



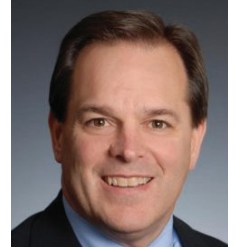
Bill Garner
Secretary/Treasurer



David Bolt
Board Member



Leo Calderon
Board Member



Garren Colvin
Board Member



Al Cornish
Board Member



Ben Cundiff
Board Member



Susan Elkington
Board Member



Bonnie Lash Freeman
Board Member



Franklin Jelsma
Board Member



Christian Motley
Board Member



Julia L. Roberts
Board Member



Harvie Wilkinson
Board Member



William H. Wilson
Board Member



Gwendolyn Young
Board Member

Our Team



Brigitte Blom Ramsey
President & CEO



Perry Papka
Deputy Director
Policy and Research



Suzetta Creech
Director
Community Engagement
Chief of Staff



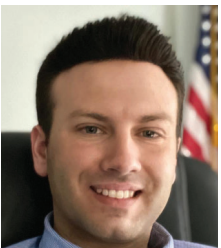
Jessica Fletcher
Senior Director
Communications
and External Affairs



Brooke Gill
Director
Family Engagement



Melody Brooks
Finance & HR Manager



Benjamin Gies
Director, Early Childhood
Policy & Practice



Laura Beard
Family Engagement
Coordinator



Andria Jackson
Community Engagement
Coordinator



**The
Prichard
Committee**

Building a Groundswell
for a Big Bold Future

www.prichardcommittee.org

859-233-9849

271 West Short St., Suite 202
Lexington KY 40507



**The
Prichard
Committee**

IN MEMORIAM

Board & Founding Members Lost in 2020



Carol Lamm



Bill McCann



Wade Mountz



Alice Sparks